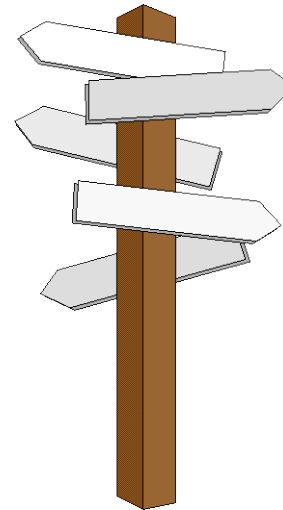


Traveling to West Point



FROM NEW YORK CITY:

Head north to the George Washington Bridge/I-95 South. Cross the bridge via the upper deck (no toll in this direction), and stay in the right lane as immediately at the end of the bridge you will exit right on to the Palisades Interstate Parkway.

Approximate driving time from midtown (light traffic): 1 hour, 20 minutes

From LaGuardia Airport (light traffic): 1 hour, 30 minutes

From John F. Kennedy International Airport (light traffic): 1 hour, 45 minutes

Cab fares to West Point from NYC are about \$150 without tolls or gratuity

FROM NORTH: Take I-87 (NYS Thruway) South to Exit 16 (Harriman), Follow Route 6 East to Route 293 East. Take Route 9W South Toward Stony Lonesome Gate and Thayer Gate.

FROM SOUTH: Take I-87 North to Exit 16 (Harriman), Follow Route 6 East to Route 293 East. Take Route 9W South Toward Stony Lonesome Gate and Thayer Gate.

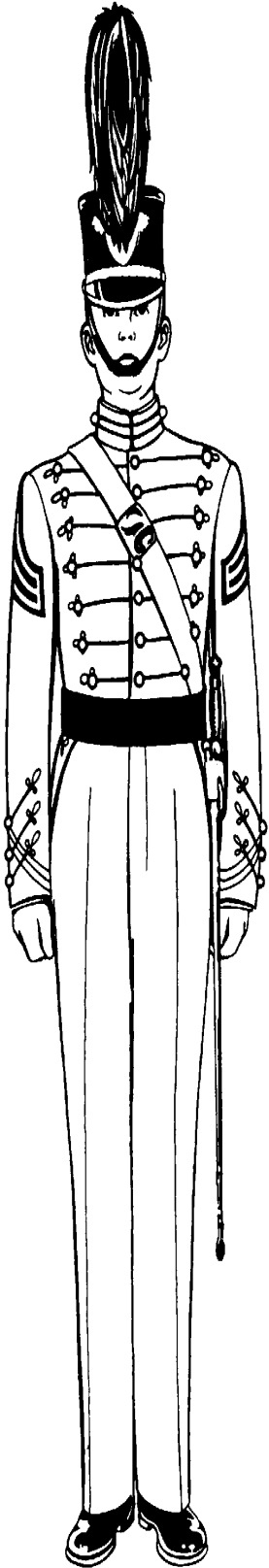
FROM SOUTHEAST: Take I-287 West Across the Tappan Zee Bridge. Follow to Exit 13N for Palisades Parkway North. Follow the Bear Mountain Traffic Circle. Go Three-Quarters of the Way Around the Circle and Take Route 9W North to West Point. Take Second Exit Toward Stony Lonesome gate (Approx. 4.5 Miles from Bear Mountain Traffic Circle).

FROM WEST: Take Route 17 East to Exit 130A (Harriman), Take Route 6 East to Route 293 East. Take Route 9W South Toward Stony Lonesome Gate and Thayer Gate.

GPS addresses: (Stony Lonesome Gate)

Stony Lonesome Gate - 1 Stony Lonesome Road. West Point, NY

Local Lodging



West Point Area:

Hotel Thayer
Thayer Road
West Point, NY
(845) 446-4731

Holiday Inn Express
1106 Route 9W
Fort Montgomery, NY
(845) 446-4277

West Point Motel
156 Main Street
Highland Falls, NY
(845) 446-4180

Best Western Palisades
Route 218 & 9W
Highland Falls, NY
(845) 446-9400

U.S. Academy Motel
41 Main Street
Highland Falls, NY
(845) 446-2021

Bear Mountain Inn
Route 9W
Bear Mountain, NY
(854) 786-2731

North of West Point: - approximately 15-30 minutes from West Point

Hampton Inn –
60 Centre Drive
Central Valley, NY
(845) 782-9600

Hudson Valley Hotel
90 Route 17K
Newburgh, NY
(845) 564-9020

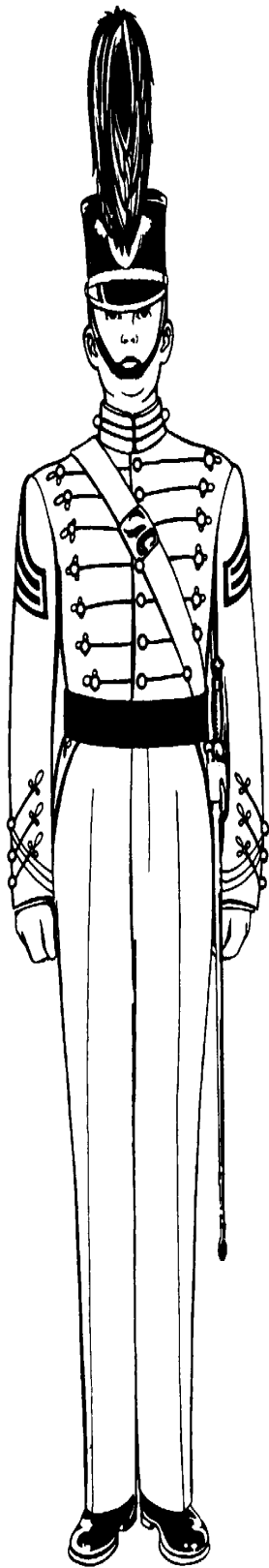
Howard Johnson Lodge
95 Route 17K
Newburgh, NY
(845) 564-4000

Ramada Inn
1055 Union Avenue
Newburgh, NY
(845) 564-4500

Days Inn
845 Union Avenue
Newburgh, NY
(845) 564-7550

Super 8 Motel
1287 Route 300
Newburgh, NY
(845) 564-5700

Comfort Inn
5 Lakeside Road
Newburgh, NY
(845) 567-0567



Local Lodging

Econo Lodge
31 Windsor Drive
New Windsor, NY
(845) 561-6620

Courtyard by Marriott
4 Governor Drive
Newburgh, NY
(845) 567-4800

Hampton Inn of Newburgh
1054 Union Avenue
Newburgh, NY
(845) 567-9100

New Jersey Hotels: -approximately 40-45 minutes to West Point

Ramada Inn
180 Rt. 17S
Mahwah, NJ
(201) 529-5880

Sheraton International
One International Blvd.
Mahwah, NJ
(201) 529-1660

Courtyard Marriott
140 Route 17S
Mahwah, NJ
(201) 529-5200

South of West Point: -approximately 40-50 minutes to West Point

Marriott-Westchester
670 White Plains Road
Tarrytown, NY
(914) 631-2200

Holiday Inn
3 Executive Blvd.
Suffern, NY
(914) 357-4800

Marriott Park Ridge
300 Brae Blvd.
Park Ridge, NJ
(201) 307-0800

Pearl River Hilton
500 Veterans Memorial
Pearl River, NY
(914) 735-9000



LOCAL AREA RESTAURANTS

Highland Falls

Hacienda Restaurant
145 Main Street
(845) 446-8257

Thayer Hotel
Thayer Road
(845) 446-4731

McDonald's
Main Street
(845) 446-4935

Park Restaurant
64 Main Street
(845) 446-8709

Schade's Restaurant
54 Main Street
(845) 446-2626

American Burrito
467 Main Street
(845) 446-2345

Dong Fong Restaurant
78 Main Street
(845) 446-0763

Maria Bonita Mexican Restaurant
315 Main Street
(845) 446-5393

Subs/Pizza:

West Point Pizza
282 Main Street
(845) 446-5544

Highland Falls Market
447 Main Street
(845) 446-3992